

SCHOOL PROFILE 2021

NEERJA MODI SCHOOL

KNOWLEDGE, TRUTH AND WISDOM - NURTURED BY VALUES

CBSE Aff. No. : 1730210

IB School Code : 3409

CIE Centre No. : In689

CEEB Code : 671654

UCAS Code : 40495



ABOUT US

Principal: Ms.Indu Dubey (indu@nmsindia.org)

IB Coordinator: Ms.Sarita Nathawat (sarita@nmsindia.org)

Guidance Counselor: Ms.Juanita Wazz (juanita@nmsindia.org), Ms.Arputa Gupta (arpita@nmsindia.org)

Team member: Ms.Namrata Pandey (namratapandey@nmsindia.org)

Team member: Ms.Apoorva Pushpita (apoorva@nmsindia.org)

We are a co-educational day & boarding school serving Grades kindergarten to 12. Most of our learners begin school with us as pre- primary students and graduate with us as high school seniors. Our diverse student community is majorly drawn from all parts of India along with a small number of students from Nepal, Thailand, Russia and Europe. Students form friendships and relationships that last a lifetime. We also pride ourselves in being an academically competitive School.

Sports, visual and performing arts along with community service and leadership, are an integral part of every student's life. Our school has a strength of 5200 students and 500 faculty, hosted on a 20 acre property with state-of-the-art facilities.

NMS AWARDED
School of Eminence 2021-22

No.1 DAY-CUM-BOARDING SCHOOL
in Rajasthan & Jaipur
(In 2017, 2019 & 2020)

EducationWorld
www.educationworld.in

COURSE OFFERINGS FOR THE ACADEMIC YEAR

IB SUBJECTS

Group 1: Studies in Language & Literature	Group 2: Language Acquisition	Group 3: Individuals and Societies	Group 4: Sciences	Group 5: Mathematics	Group 6: The Arts
English Language A: literature (HL/SL)	Hindi B (HL/SL), French B (HL/SL) French AB initio (SL)	Economics (SL/HL), Business & Management (SL/HL), History (SL/HL), Psychology (SL/HL), Global Politics (SL/HL)	Biology (SL/HL), Chemistry (SL/HL), Physics (SL/HL), Computer Science (SL/HL)	Mathematics, Analysis and Approach (SL/HL) Mathematics, Application and Interpretation (SL/HL)	Visual Arts (SL/HL)

CBSE SUBJECTS

SCIENCE STREAM		COMMERCE STREAM		HUMANITIES STREAM	
COMPULSORY	English Elective C (101), Physics (042), Chemistry (043)	COMPULSORY	English Elective C (101), Business Studies (054), Economics (030), Accountancy (055)	COMPULSORY	English Elective C (101)
	ANY ONE SUBJECT		Biology (044), Mathematics (041)		Information Practice (065), Vocal Music (034), Commercial Arts (052), Mathematics (041), Psychology (037), Entrepreneurship (066), Home Science (064), Physical Education (048), Geography (029), Information Practice (065), Vocal Music (034), Psychology (037)

IGCSE SUBJECTS

Group 1: Languages	Group 2: Social Sciences	Group 3: Sciences	Group 4: Mathematics	Group 5: Creative, Technical & Vocational
English as First Language (0500), Hindi Second Language (0549), French as a Foreign Language (0520)	Economics (0455), Literature (0475), History (0470), Global Perspectives (0457)	Physics (0625), Chemistry (0620), Biology (0610)	International Mathematics (0607), Additional Math (0606)	ICT (0417), Business Studies (0450), Art & Design (0400), Computer Science (0478)

OUR RESPONSE TO THE GLOBAL PANDEMIC

When all educational institutions were shut by the Indian Government in March 2020, Neerja Modi School transitioned to virtual instruction through synchronous learning for all academic and co-curricular activities. We re-opened in January 2021, only to shut again in March 2021 due to the devastating impact of the 2nd wave of COVID-19 that swept the nation.

Many students, families, and staff members were diagnosed with COVID-19, and some lost loved ones. This called for large-scale counseling and support for our students, parents and staff. The students also faced severe setbacks in their plans for internal assessments and Science Practical lab work and CAS activities, without access to laboratories, library, and field visits. The school moved all assessments online, ensuring academic honesty through strict monitoring and procedures.

Our college counseling department has also gone virtual. Our main goal was to support students in navigating these unprecedented times: we focussed on stress management, as well as on nurturing social and emotional well-being. The virtual program provides seniors and their families with individual meetings, small group counseling sessions, and guidance presentations. Moreover, we organized virtual college rep visits, virtual college fairs, and virtual application workshops to ensure students' college applications remain accurate and thoughtfully completed.

ANNUAL GRADUATING CLASS RECOGNITION

School awards that recognize student achievements in several categories including:

- Shrimati Bimla Gupta Memorial Gold Medal: for the Most Promising Girl Student of the Year
- Shri Anshoo Sudhir Gupta Memorial Gold Medal: for the Most Promising Science Student of the Year
- Distinguished Student Leader Award: for Accomplished Leadership Role
- Excellence in Science: Demonstrating Excellence in Science and Technology
- Leadership in Innovation: Strong leadership and Entrepreneurial Skills
- Social Impact Award: for Exemplary Service for a Social Cause
- Edgemaker Award: for Innovative and Entrepreneurial Achievement
- Pt. Birju Maharaj Dance Trophy: for the Best Dancer of the Year



STUDENT OPPORTUNITIES

NMS offers wide-ranging opportunities to students to engage in meaningful co-curricular and leadership experiences. During this academic year, we witnessed the creation of more than 10 student-led clubs, adding up to a sum of more than 30 student-led organizations and activities. Student participation in our diverse range of clubs such as the Art Appreciation Club, Biosciences Club, Chemistry Club, Psychology Club, and much more is reflective of the diversity and initiative within our community.

Moreover, many of our activities have taken place virtually this year: including Jaipur Debate, MUN, Research Programmes, Literature Festival, Summer Camps, Annual Club Fair, Community Service projects (Music Concert Fundraiser, and work with local NGOs), Leadership programmes like TEDxYouth@NMS and Student Council responsibilities, and more. Each student is allowed to join not more than 2 societies or clubs in an academic year.

ACADEMIC CURRICULUM

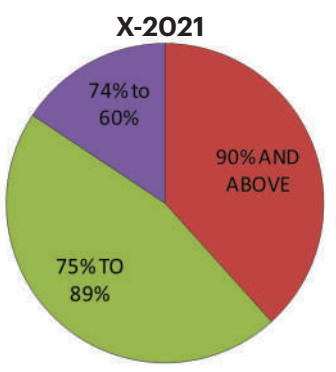
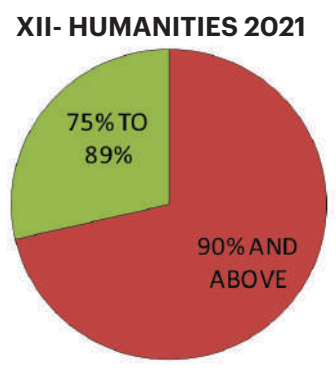
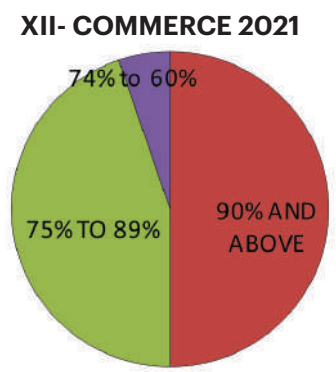
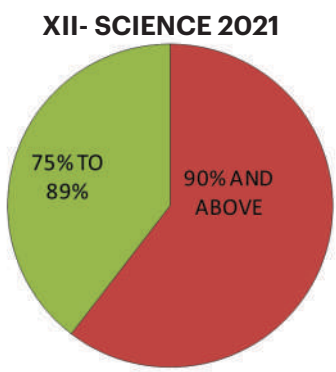
We operate on a semester calendar with Semester 1 from April to September, and Semester 2 from October to March. International IGCSE and IB Diploma Program:

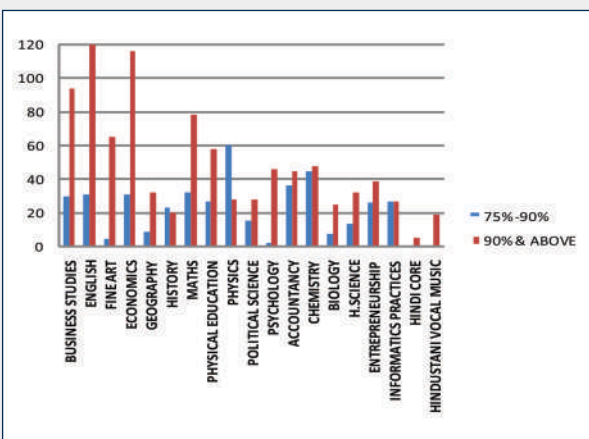
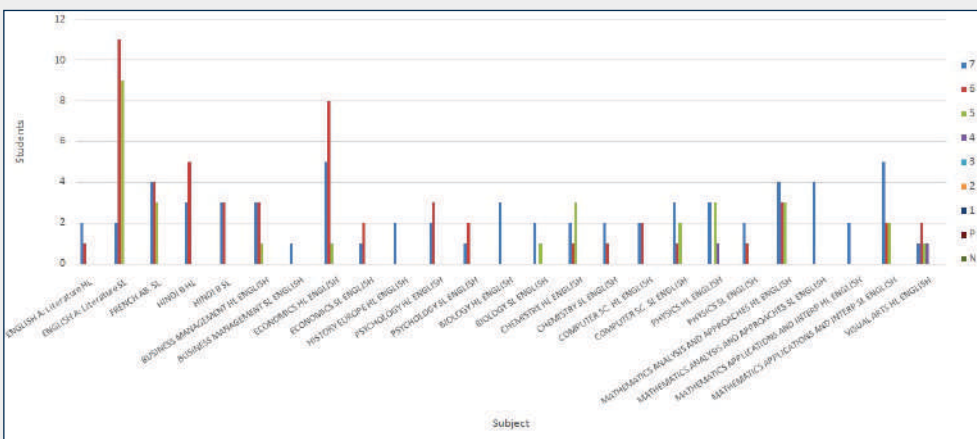
IGCSE 9-10: A minimum of 7 and maximum of 10 Subjects
IBDP 11-12: 3 Subjects at Higher Level & 3 at Standard Level, TOK course, 4000 word Extended Essay & minimum of 150 hrs of CAS

National CBSE:
CBSE 9-10: 6 Subjects - English, Hindi, Sanskrit or French, Mathematics, Science, Social Science
CBSE 11-12: Streams offered: Science, Commerce & Humanities
5 Subjects have to be studied for 2 continuous years
*Graded for Work Education, Physical Health Education and General Studies.

RESULT 2020-21

CBSE RESULT 2021		IBDP RESULT 2021	
TOTAL NO. OF STUDENTS	314	TOTAL NO. OF STUDENTS	25
HIGHEST SCORE	99.4%	HIGHEST IBDP SCORE	45
SCHOOL AVERAGE	89.98%	SCHOOL AVERAGE DIPLOMA SCORE	39.4
ENROLLMENT 2021 - 2022 CBSE CURRICULUM		100% RESULT 100% DIPLOMAS AWARDED	
Total: 2930		ACT Score Average for the Class of 2021	
High School (9-12): 1440		Subject Average Score Highest Score	
Graduating Class: 335		Math	32 36
Science: 90		Science	30 35
Commerce: 147		Reading	28 33
Humanities: 98		English	30 36
INTERNATIONAL CURRICULUM		Composite	30 35
CP (1-8): 600		SAT Score Average for the Class of 2021	
IGCSE (9-10): 108		Subject Average Score Highest Score	
IBDP (11-12): 73		EWR	652 780
IB Graduating Class: 39		Math	726 800
		SAT	1378 1560





NATIONAL ACCEPTANCES

- All India Institute of Medical Science
- Amity University
- Ashoka University
- Bharti Vidyapeeth University
- Birla Institute of Technology- Pilani, Ranchi & Dubai
- Christ College, Bangalore
- Delhi University - SRCC, Miranda House
- Engineering Colleges- Mumbai University
- Fergusson College, Pune
- Flame University
- Government Law College Mumbai
- Indian Institute of Information Technology
- Indian Institute of Science & Research
- Indian Institute of Technology- All Campus
- Institute of Hotel Management
- ISDI Parsons- Mumbai
- Jaipur Dental College
- Kamala Raheja College of Architecture
- Mahatma Gandhi Medical College
- Manipal University- Manipal, Jaipur
- MICA
- Mount Carmel Bangalore
- Mumbai University - All Colleges
- Narsee Monjee Institute of Management Studies
- National Institute of Design
- National Institute of Technology
- National Law University- Hyderabad, Bangalore & Kolkatta
- National Institute of Fashion Technology
- Nirma University
- OP Jindal Global University
- Sawai Maansingh Medical College
- Shristi College, Bangalore
- SRM University, Chennai
- St. Xavier's College- Mumbai, Kolkatta & Jaipur
- Symbiosis University Pune
- Unitedworld Institute Of Design (UID)
- UPES, Dehradun
- Vellore Institute of Technology, Chennai

INTERNATIONAL ACCEPTANCES

- United States**
- Amherst College
- Lafayette College
- American University
- Arizona State University
- Augustana College
- Babson College
- Bentley University
- Beloit College
- Binghampton University- SUNY
- Boston University
- Bowling Green State University
- Brandeis University
- Brown University
- Bryant University
- Bryn Mawr College
- Bucknell University
- Carnegie Mellon University
- California College of Arts
- California Institute of Technology
- California Polytechnic State University
- Carleton College
- Case Western Reserve University
- Centre college
- Chapman University
- Clarke University
- Cleveland Institute of Art
- Colby College
- Colgate University
- Cornell University
- Connecticut College
- Dartmouth College
- Davidson College
- DePaul University
- Dickinson College
- Drew University
- Drexel University
- Duke University
- Earlham College
- Elon University
- Emerson College
- Emory University
- Fashion Institute of Technology
- Florida Atlantic University
- Florida Institute of Technology
- Fordham University
- Full Sail University
- Franklin W.Olin Engineering College
- Georgetown University
- Georgia Institute of Technology
- George Mason University
- Georgia State University
- George Washington University
- Grinnell College
- Goucher College
- Harvey Mudd College
- Harvard University
- Haverford College
- Indiana University
- IOWA State University
- Ithaca College
- Jefferson College
- Johns Hopkins University
- Johnson & Wales University
- Juniata College
- Kalamazoo College
- Kenyon College
- Knox College
- Lafayette College
- Lawrence University
- Lehigh University
- Loyola Marymount University
- Lynn University
- Maryland Institute College of Art
- Massachusetts College of Art Design
- Massachusetts Institute of Technology
- Middlebury College
- Michigan State University
- Minerva Schools at KGI
- Mount Holyoke College
- New York University
- New York Institute of Technology
- Northeastern University
- Oberlin College
- Old Dominion University
- Ohio Wesleyan University
- Ohio State University
- Otis College of Art and Design
- Pace University
- Parsons School of Design
- Penn State University
- Philadelphia University
- Pomona College
- Pratt Institute
- Princeton University
- Purdue University
- Quinnipiac University
- Reed College
- Rensselaer Polytechnic Institute
- Rhode Island School of Design
- Rice University
- Rollins College
- Rose-Hulman Institute of Technology
- Rutgers University
- Sacred Heart University
- Santa Barbara City college
- San Jose State University
- Sarah Lawrence College
- Savannah College of Art and Design
- SCAD Atlanta
- School of the Art Institute of Chicago
- Seton Hall University
- Skidmore College
- Stanford University
- Stony Brook University
- SUNY Binghampton University
- SUNY Plattsburg
- SUNY Newpaltz
- SUNY Stony Brook
- SUNY Buffalo
- Swarthmore College
- Syracuse University
- Temple University
- Texas Christian University
- Texas A&M university
- The University of West Alabama
- Tufts University
- Tulane University
- Union College
- University of Arizona
- University of Cincinnati
- University of Dayton
- University of Delaware
- University of Georgia
- University of British Columbia
- University of California- Berkeley
- University of California- Davis
- University of California- Irvine
- University of California- Los Angeles
- University of California- San deigo
- University of California- Santa Cruz
- University of California- Santa Barbara
- University of Connecticut
- University of Florida
- University of Houston
- University of Illinois Chicago
- University of Illinois at Urbana
- University of Kansas
- University of Massachusetts Amherst
- University of Maryland Baltimore County
- University of Maryland College Park
- University of Memphis
- University of Miami
- University of Minnesota- Twin cities
- University of Michigan- Ann Arbour
- University of North Carolina-Chapel Hill
- University of Pennsylvania
- University of Pittsburgh
- University of Richmond
- University of Rochester
- University of San Deigo
- University of San Fransisco
- University of Southern California
- University of Tampa
- University of Texas - Austin
- University of Texas at Dallas
- University of Virginia
- Villanova University
- University of Washington- Seattle
- University of Wisconsin, Madison
- USC- Marshall School of Business
- Vanderbilt University
- Virginia Common Wealth University
- Virginia Tech University
- Washington College
- Washington and Lee University
- Washington University- Saint Louis
- Wesleyan College
- Williams College
- Wheaton College
- Whittier College
- Whitworth University
- Yale University
- Europe**
- Catholic University of the Sacred Heart
- Cologne Bussiness School
- Design Academy Eindhoven
- European Business school
- Glion- Institute for Higher Education
- IED - Istituto Europeo di Design Spa
- International Business School Budapest
- Trinity College Dublin
- University of Amsterdam
- University of Groningen
- University of Twente
- Vrije Universiteit Amsterdam
- Paris**
- Instituto Marangoni, Paris
- The New School, Parsons

INTERNATIONAL ACCEPTANCES

- Australia**
- Australian National University
- Deakin University
- Macquarie University
- Monash University
- RMIT University
- Swinburne University
- University of Melbourne
- University of New South Wales
- University of Technology
- University of Queensland
- University of Western Australia
- University of Wollongong
- University of Sydney
- University of Technology Sydney
- Hong Kong**
- City University of Hong Kong
- Hong Kong University
- Hong Kong Baptist University
- Hong Kong Polytechnique University
- Hong Kong University of Science & Tech.
- Savannah College of Art and Design
- The Chinese University of Hong Kong
- The University of Hong Kong

INTERNATIONAL ACCEPTANCES

United Kingdom
Aston University
Birkbeck, University of London
Cambridge University
Cardiff University
Central Saint Martins
City University London
De Montfort University
Durham University
Glasgow School of Arts
Goldsmiths, University of London
Heriot-Watt University
Hult International Business School
Istituto Marangoni- London
Imperial College- London
King's College London
Lancaster University
Leeds Arts University
Leeds Beckett University
London College of Fashion
London School of Economics
Loughborough University
Middlesex University London
Manchester Metropolitan University
New Castle University
Nottingham Trent University
Oxford University
Queen Mary University of London
Royal Holloway, University of London
St. Andrews University
SOAS, University of London
University College London
University College Birmingham
University of the Arts London
University of Aberystwyth
University of Bath
University of Birmingham
University of Bolton
University of Bristol
University of Cambridge
University of Cumbria
University of Derby
University of Dundee
University of Edinburgh
University of Essex
University of Exeter
University of Glasgow
University of Hertfordshire
University of Hull
University of Leeds
University of Leicester
University of Liverpool
University of Manchester
University of Northampton
University of Nottingham
University of Portsmouth
University of Sheffield
University of Southampton
University of St Andrews
University of Sussex
University of Warwick
University of West of England, Bristol
University of West London
University of Westminster
University of York
Japan
Ritsumeikan University
Ritsumeikan Asia Pacific University
Tokyo University
Waseda University
Osaka University
Singapore
Lasalle College of the Arts
National University of Singapore
Nanyang Academy of Fine Arts
Nanyang Technological University
Singapore Institute of Management
Singapore Management University
Yale-NUS College
France
Grenoble école de management
L'Ecole de Design - Nantes Atlantique
L'Institut Supérieur des Arts Appliqués - LISAA
Paris College of Arts
Parsons Paris - New School
Sciences PO

Canada
Brock University
Carleton University
Dalhousie University
Humber College
Lancaster University
McGill University
McMaster University
Ontario Tech University
Queen's University
Ryerson University
Simon Fraser University
Trent University
University of Alberta
University of British Columbia
University of Calgary
University of Guelph
University of Ottawa
University of Toronto
University of Victoria
University of Waterloo
University of Western Ontario
Wilfrid Laurier University
York University
UAE
New York University Abu Dhabi
Dubai Institute of Design and Innovation
Netherlands
Delft University of Technology
Erasmus University Rotterdam
Leiden University College The Hague
University of Amsterdam
Wageningen University
Germany
Karlsruhe Institute of Technology
University of Ingolstadt