

# SCHOOL PROFILE 2022

# NEERJA MODI SCHOOL

KNOWLEDGE, TRUTH AND WISDOM - NURTURED BY VALUES

CBSE Aff. No. : 1730210

IB School Code : 3409

CIE Centre No. : In689

CEEB Code : 671654

UCAS Code : 40495



## ABOUT US

Principal: Ms.Indu Dubey (indu@nmsindia.org)

IB Coordinator: Ms.Sarita Nathawat (sarita@nmsindia.org)

Guidance Counselor: Ms.Juanita Wazz (juanita@nmsindia.org), Ms.Arputa Gupta (arputa@nmsindia.org)

Team member: Ms.Namrata Pandey (namratapandey@nmsindia.org)

Team member: Ms.Apoorva Pushpita (apoorva@nmsindia.org)

We are a co-educational day cum boarding school serving grades kindergarten to 12. Most of our learners begin school with us as pre- primary students and graduate with us as high school seniors. Our diverse student community hails from all parts of India as well as other countries of the world. Students form friendships and relationships that last a lifetime. We pride ourselves in being an academically competitive school, offering 3 boards (CBSE, IB, IGCSE). We consciously promote inclusivity with affordable access to all international curriculums. Sports, visual and performing arts along with community service and leadership, are an integral part of every student's life. Our school has a strength of about 5800 students and 400 faculty, hosted on a 20 acre property with state-of-the-art facilities.

India's Best Schools 2022 - Careers 360

Most Preferred Workplace 2022-  
Marksmen in partnership with India  
Today Television

School of Eminence Award with A\* rating

India No.6 and No.1 DAY-CUM-BOARDING SCHOOL  
in Rajasthan & Jaipur (In 2017, 2019, 2020 & 2022)

**EducationWorld**  
www.educationworld.in

## COURSE OFFERINGS FOR THE ACADEMIC YEAR

### IB SUBJECTS

Group 1: Studies in Language & Literature	Group 2: Language Acquisition	Group 3: Individuals and Societies	Group 4: Sciences	Group 5: Mathematics	Group 6: The Arts
English Language A: Literature (HL/SL)	Hindi B (HL/SL), French B (HL/SL) French AB initio (SL)	Economics (SL/HL), Business & Management (SL/HL), History (SL/HL), Psychology (SL/HL), Global Politics (SL/HL)	Biology (SL/HL), Chemistry (SL/HL), Physics (SL/HL), Computer Science (SL/HL) ESS (SL)	Mathematics, Analysis and Approach (SL/HL) Mathematics, Application and Interpretation (SL/HL)	Visual Arts (SL/HL)

### IGCSE SUBJECTS

Group 1: Languages	Group 2: Social Sciences	Group 3: Sciences	Group 4: Mathematics	Group 5: Creative, Technical & Vocational
English as First Language (0500), Hindi Second Language (0549), French as a Foreign Language (0520)	Economics (0455), Literature (0475), History (0470), Global Perspectives (0457)	Physics (0625), Chemistry (0620), Biology (0610)	International Mathematics (0607), Additional Math (0606)	ICT (0417), Business Studies (0450), Art & Design (0400), Computer Science (0478)

### CBSE SUBJECTS (Grade 11 and 12)

COMPULSORY	English Core (301)				
ANY FOUR SUBJECTS (Minimum)	Biology (044), Chemistry (043) Physics (042), Mathematics (041),	Applied/ Commercial Arts (052), Economics (030), Entrepreneurship (066), Home Science (064),	Physical Education (048), Geography (029), Information Practice (065), Vocal Music (034),	Psychology (037), Business Studies (054), Accountancy (055), Applied Mathematics (241),	History (027), Political Science (028), Hindi Core (302)

### CBSE SUBJECTS (Grade 9 and 10)

English Literature & Language (184)	Mathematics Standard (041) Mathematics Basic (241)	Science (086)	Social Science (087)	French (018), Hindi Course - A (002), Sanskrit (122)	Additional Subject Information Technology (402)
-------------------------------------	---	---------------	----------------------	---	--



## ANNUAL GRADUATING CLASS RECOGNITION

School awards that recognize our student achievements in several categories including:

- **Shrimati Bimla Gupta Memorial Gold Medal:** for the Most Promising Female Student of the Year
- **Shri Anshoo Sudhir Gupta Memorial Gold Medal:** for the Most Promising Science Student of the Year
- **Distinguished Student Leader Award:** for Accomplished Leadership Role
- **Excellence in Science:** Demonstrating Excellence in Science
- **Tech for Good:** for the best use of technology to positively impact our community
- **Leadership in Innovation:** Strong leadership and Entrepreneurial Skills
- **Social Impact Award:** for Exemplary Service for a Social Cause
- **Edgemaker Award:** for Innovative and Entrepreneurial Skills
- **Pt. Birju Maharaj Dance Trophy:** for the Best Dancer of the Year
- **Excellence in STEM:** Demonstrating Excellence in Science and Technology



## STUDENT OPPORTUNITIES

NMS offers wide-ranging opportunities to students to engage in meaningful co-curricular and leadership experiences. During this academic year, we witnessed the creation of more than 10 student-led clubs, adding up to a sum of more than 30 student-led initiatives. Student participation in our diverse range of clubs such as the Art Appreciation Club, Biosciences Club, Chemistry Club, Psychology Club and much more is reflective of the diversity and initiative within our community. Moreover, activities including Jaipur Debate, MUN, Literature Festival, Summer Camps, Annual Club Fair, Community Service projects (Music Concert Fundraiser, and work with local NGOs), Leadership programmes like TEDxYouth@NMS, Student Council responsibilities, and more returned to the campus after two years and were well received by the local and national school community. The over enthusiastic participation is a testimony to this. Each student can join no more than 2 societies or clubs in an academic year.

## ACADEMIC CURRICULUM

We operate on a semester calendar with Semester 1 from April to September, and Semester 2 from October to March. International IGCSE and IB Diploma Program:

**IGCSE 9-10:** A minimum of 7 and maximum of 10 Subjects

**IBDP 11-12:** 3 Subjects at Higher Level & 3 at Standard Level, TOK course, 4000 word Extended Essay & minimum of 150 hrs of CAS

**National CBSE:**

**CBSE 9-10:** 6 Subjects - English, Hindi, Sanskrit or French, Mathematics, Science, Social Science, Information Technology

**CBSE 11-12:** 5 Subjects have to be studied for 2 continuous years, English being one of the compulsory subject.

\*Graded for Work Education, Physical Health Education and General Studies.

## RESULT 2021-22

### CBSE RESULT 2022

TOTAL NO. OF STUDENTS	335
HIGHEST SCORE	99%
SCHOOL AVERAGE	84.92%

### ENROLLMENT 2022 - 2023 CBSE CURRICULUM

Grade 1-8-3171

High School (9-12): 1560

Graduating Class: 313

Science: 87

Commerce: 153

Humanities: 73

### INTERNATIONAL CURRICULUM

CP (1-8): 619

IGCSE (9-10): 107

IBDP (11-12): 81

IB Graduating Class: 31

### IBDP RESULT 2022

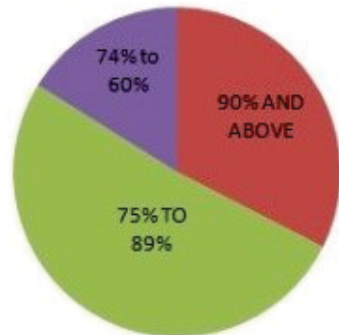
TOTAL NO. OF STUDENTS	38
HIGHEST IBDP SCORE	45
SCHOOL AVERAGE DIPLOMA SCORE	37.35

### 100% RESULT 100% DIPLOMAS AWARDED

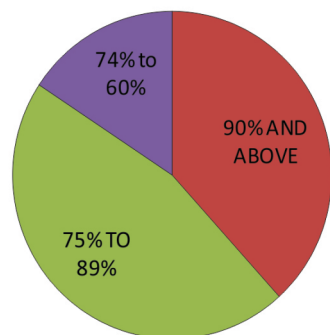
### SAT Score Average for 2022

Subject	Average Score	Highest Score
EWR	630	770
Math	727	800
SAT	1356	1560

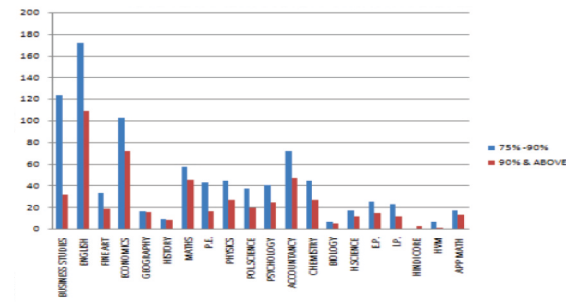
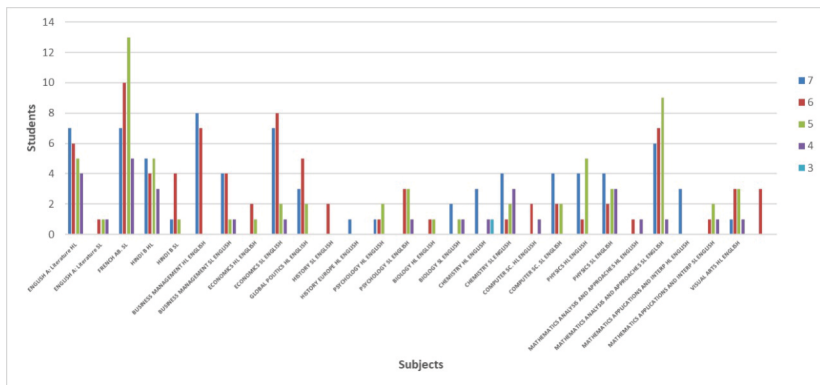
### XII-2022



### X-2022







## NATIONAL ACCEPTANCES

All India Institute of Medical Science  
Amity University  
Ashoka University  
Ahmedabad University  
Bharti Vidyapeeth University  
Birla Institute of Technology- Pilani, Ranchi & Dubai  
Christ College, Bangalore  
Delhi University - SRCC, Miranda House  
Engineering Colleges- Mumbai University  
Fergusson College, Pune  
Flame University  
Government Law College Mumbai  
Institute of Sports Management  
Indian Institute of Information Technology  
Indian Institute of Science & Research  
Indian Institute of Art & Design  
Indian Institute of Technology- All Campus  
Institute of Hotel Management  
ISDI Parsons- Mumbai  
Jaipur Dental College  
Jain University  
Kamala Raheja College of Architecture  
Mahatma Gandhi Medical College  
Manipal University- Manipal, Jaipur  
MICA  
Mount Carmel Bangalore  
Mumbai University - All Colleges  
Narsee Monjee Institute of Management Studies  
National Institute of Design  
National Institute of Technology  
National Law University- Hyderabad, Bangalore  
Kolkatta, Mumbai & Jabalpur  
Nirma University  
National Institute of Fashion Technology  
Nirma University  
OP Jindal Global University  
Sawai Maansingh Medical College  
Shristi Institute of Art, Design and Tech., Bangalore  
SRM University, Chennai  
Shiv Nadar University  
St. Xavier's College- Mumbai, Kolkatta & Jaipur  
Symbiosis University Pune  
Unitedworld Institute Of Design (UID)  
UPES, Dehradun  
Vellore Institute of Technology- Chennai

### United States

Amherst College  
American University  
Arizona State University  
Augustana College  
Babson College  
Bentley University  
Beloit College  
Binghamton University- SUNY  
Boston University  
Bowling Green State University  
Brandeis University  
Brown University  
Bryant University  
Bryn Mawr College  
Bucknell University  
Carnegie Mellon University  
California College of Arts  
California Institute of Technology  
Claremont McKenna College  
California Polytechnic State University  
Carleton College  
Case Western Reserve University  
Centre college  
Chapman University  
Clarke University  
Cleveland Institute of Art  
Colby College  
Colgate University  
Cornell University  
Connecticut College  
Dartmouth College  
Davidson College  
DePaul University  
Denison University  
DePaul University  
Draper University  
Dickinson College  
Drew University  
Drexel University  
Duke University  
Earlham College  
Elon University  
Emerson College  
Emory University  
Fashion Institute of Technology  
Florida Atlantic University  
Florida Institute of Technology  
Fordham University  
Full Sail University  
Franklin W.Olin Engineering College  
Georgetown University  
Georgia Institute of Technology  
George Mason University  
Georgia State University  
George Washington University  
Grinnell College  
Goucher College  
Harvey Mudd College  
Harvard University  
Haverford College  
Hofstra University  
Indiana University  
IOWA State University  
Ithaca College  
Illinois Institute of Technology  
Jefferson College  
Johns Hopkins University  
Johnson & Wales University  
Juniata College  
Kalamazoo College  
Kenyon College  
Knox College  
Lafayette College  
Lawrence University  
Lehigh University  
Lewis & Clark College  
Loyola Marymount University  
Lynn University- Lewis & Clark

Maryland Institute College of Art  
Massachusetts College of Art Design  
Massachusetts Institute of Technology  
Middlebury College  
Michigan State University  
Minerva Schools at KGI  
Mount Holyoke College  
New York University  
New York Institute of Technology  
Northeastern University  
Northwestern University  
Oberlin College of Arts & Science  
Old Dominion University  
Ohio Wesleyan University  
Ohio State University  
Occidental College  
Otis College of Art and Design  
Pace University  
Parsons School of Design  
Penn State University  
Philadelphia University  
Pomona College  
Pratt Institute  
Princeton University  
Purdue University  
Quinnipiac University  
Reed College  
Rensselaer Polytechnic Institute  
Rhode Island School of Design  
Rice University  
Rollins College  
Rose-Hulman Institute of Technology  
Rochester Institute of Technology  
Rutgers University  
Sacred Heart University  
Santa Barbara City college  
San Jose State University  
Sarah Lawrence College  
Savannah College of Art and Design  
SCAD Atlanta  
School of the Art Institute of Chicago  
Seton Hall University  
Skidmore College  
Stanford University  
Stony Brook University  
Stevens Institute of Technology  
SUNY Binghamton University  
SUNY Plattsburg  
SUNY Newpaltz  
SUNY Stony Brook  
SUNY Buffalo  
Swarthmore College  
Syracuse University  
Temple University  
Texas Christian University  
Texas A&M university  
The University of West Alabama  
Trinity College Dublin  
Trinity University  
Tufts University  
Tulane University  
Union College  
University of Illinois Urbana-Champaign  
University of Texas at Arlington  
University of Arizona  
University of Cincinnati  
University of Dayton  
University of Delaware  
University of Georgia  
University of California- Berkeley  
University of California- Davis  
University of California- Irvine  
University of California- Los Angeles  
University of California- San deigo  
University of California- Santa Cruz  
University of California- Santa Barbara  
University of Colorado Boulder  
University of Connecticut

University of Florida  
University of Houston  
University of Illinois Chicago  
University of Illinois at Urbana champagin  
University of Kansas  
University of Massachusetts Amherst  
University of Maryland Baltimore County  
University of Maryland College Park  
University of Memphis  
University of Miami  
University of Minnesota- Twin cities  
University of Michigan- Ann Arbour  
University of North Carolina-Chapel Hill  
University of Pennsylvania  
University of Pittsburgh  
University of Richmond  
University of Rochester  
University of San Deigo  
University of San Francisco  
University of Southern California  
University of Tampa  
University of Texas - Austin  
University of Texas at Dallas  
University of Virginia  
Villanova University  
University of Washington- Seattle  
University of Wisconsin, Madison  
USC- Marshall School of Business  
Vanderbilt University  
Virginia Common Wealth University  
Virginia Tech University  
Washington College  
Washington and Lee University  
Washington University- Saint Louis  
Wesleyan College  
Williams College  
Wheaton College  
Whittier College  
Whitworth University  
Yale University

### Europe

Catholic University of the Sacred Heart  
Cologne Bussiness School  
Design Academy Eindhoven  
European Business school  
Glion- Institute for Higher Education  
IED - Istituto Europeo di Design Spa  
IE Business School  
International Business School Budapest  
Trinity College Dublin  
University of Amsterdam  
University of Groningen  
University of Twente  
Vrije Universiteit Amsterdam

### Paris

Instituto Marangoni, Paris  
The New School, Parsons

### Hong Kong

City University of Hong Kong  
Hong Kong University  
Hong Kong Baptist University  
Hong Kong Polytechnic University  
Hong Kong University of Science & Tech.  
Savannah College of Art and Design  
The Chinese University of Hong Kong  
The University of Hong Kong

## INTERNATIONAL ACCEPTANCES

### Australia

Australian National University  
Deakin University  
Macquarie University  
Monash University  
RMIT University  
Swinburne University  
University of Melbourne  
University of New South Wales  
University of Technology  
University of Queensland  
University of Western Australia  
University of Newcastle Australia  
Griffith University  
University of Wollongong  
University of Sydney  
University of Technology Sydney

# INTERNATIONAL ACCEPTANCES

## United Kingdom

Aston University  
Arts University Bournemouth  
Birkbeck, University of London  
Brenel University London  
Bangor University  
Cambridge University  
Cardiff University  
Central Saint Martins  
Coventry University  
City University London  
De Montfort University  
Durham University  
Glasgow School of Arts  
Goldsmiths, University of London  
Heriot-Watt University  
Hult International Business School  
Istituto Marangoni- London  
Imperial College- London  
King's College London  
Kingston University London  
Lancaster University  
Leeds Arts University  
Leeds Beckett University  
London College of Fashion  
London School of Economics & Political Science  
Loughborough University  
London Metropolitin University  
Middlesex University London  
Manchester Metropolitan University  
New Castle University  
Northumbria University  
Nottingham Trent University  
Oxford University  
Queen Mary University of London  
Queen's University Belfast  
Royal Holloway, University of London  
St. Andrews University  
SOAS, University of London  
University College London  
University of Reading  
University College Birmingham  
University of the Arts London  
University of Aberystwyth  
University of Bath  
University of Birmingham  
University of Bolton  
University of Bristol  
University of Greenwich  
University of East London  
University of Cambridge  
University of Cumbria  
University of Derby  
University of Dundee  
University of Edinburgh  
University of Essex  
University of Exeter  
University of Glasgow  
University of Hertfordshire  
University of Hull  
University of Leeds  
University of Leicester  
University of Liverpool  
University of Manchester  
University of Northampton  
University of Nottingham  
University of Portsmouth  
University of Sheffield  
University of Southampton  
University of St Andrews  
University of Sussex  
University of Warwick  
University of West of England,Bristol  
University of West London  
University of Westminster  
University of York

## Japan

International Christian University  
Osaka University  
Ritsumeikan University  
Ritsumeikan Asia Pacific University  
Tokyo University  
Waseda University

## Singapore

Lasalle College of the Arts  
National University of Singapore  
Nanyang Academy of Fine Arts  
Nanyang Technological University  
Singapore Institute of Management  
Singapore Management University  
Yale-NUS College

## France

Grenoble ecole de management  
L'Ecole de Design - Nantes Atlantique  
L'Institut Supérieur des Arts Appliqués - LISAA  
Paris College of Arts  
Parsons Paris - New School  
Sciences PO

## Canada

Brock University  
Carleton University  
Dalhousie University  
Humber College  
Lancaster University  
McGill University  
McMaster University  
Ontario Tech University  
Queen's University  
Ryerson University  
Simon Fraser University  
Trent University  
University of Alberta  
University of British Columbia  
University of Calgary  
University of Guelph  
University of Ottawa  
University of Toronto  
University of Victoria  
University of Waterloo  
University of Western Ontario  
Wilfrid Laurier University  
Western University  
York University

## UAE

New York University Abu Dhabi  
Dubai Institute of Design and Innovation  
Netherlands  
Delft University of Technology  
Erasmus University Rotterdam  
Leiden University College The Hague  
University of Amsterdam  
Wageningen University  
Germany  
Karlsruhe Institute of Technology  
University of Ingolstadt