

SCHOOL PROFILE 2020

NEERJA MODI SCHOOL

KNOWLEDGE, TRUTH AND WISDOM - NURTURED BY VALUES

CBSE Aff. No. : 1730210

IB School Code : 3409

CIE Centre No. : In689

CEEB Code : 671654

UCAS Code : 40495



ABOUT US

Principal: Ms.Indu Dubey (indu@nmsindia.org)

IB Coordinator: Ms.Sarita Nathawat (sarita@nmsindia.org)

Guidance Counselor: Ms.Juanita Wazz (juanita@nmsindia.org)

We are a co-educational day & boarding school serving Grades kindergarten to 12. Most of our learners begin school with us as pre- primary students and graduate with us as high school seniors. Our diverse student community is majorly drawn from all parts of India along with a small number of students from Nepal, Thailand, Russia and Europe. Students form friendships and relationships that last a lifetime. We also pride ourselves in being an academically competitive School.

Sports, visual and performing arts along with community service and leadership, are an integral part of every student's life. Our school has a strength of 5200 students and 500 faculty, hosted on a 20 acre property with state-of-the-art facilities.

**NMS AWARDED No.1
DAY-CUM-BOARDING SCHOOL**

**in Rajasthan & Jaipur
(In year 2017 and 2019)**

EducationWorld
www.educationworld.in

COURSE OFFERINGS FOR THE ACADEMIC YEAR

IB SUBJECTS

Group 1: Studies in Language & Literature	Group 2: Language Acquisition	Group 3: Individuals and Societies	Group 4: Sciences	Group 5: Mathematics	Group 6: The Arts
English Language A: literature (HL/SL)	Hindi B (HL/SL), French ab initio (SL)	Economics (SL/HL), Business & Management (SL/HL), History (SL/HL), Psychology (SL/HL), ESS (SL)	Biology (SL/HL), Chemistry (SL/HL), Physics (SL/HL), ESS (SL), Computer Science (SL/HL)	Mathematics, Analysis and Approach (SL/HL) Mathematics, Analysis and Interpretation (SL/HL)	Visual Arts (SL/HL)

CBSE SUBJECTS

SCIENCE STREAM		COMMERCE STREAM		HUMANITIES STREAM	
COMPULSORY	English Elective C (101), Physics (042), Chemistry (043)	COMPULSORY	English Elective C (101), Business Studies (054), Economics (030), Accountancy (055)	COMPULSORY	English Elective C (101)
ANY ONE SUBJECT	Biology (044), Mathematics (041)	ANY ONE SUBJECT	Information Practice (065), Vocal Music (034), Commercial Arts (052), Mathematics (041), Psychology (037), Entrepreneurship (066), Home Science (064), Physical Education (048)	SET 1 (ANY ONE SUBJECT)	Business Studies (054), Economics (030), Psychology (037)
ANY ONE SUBJECT	Commercial Arts (052), Economics (030), Entrepreneurship (066), Home Science (064), Physical Education (048), Geography (029), Information Practice (065), Vocal Music (034), Psychology (037)			SET 2 (ANY ONE SUBJECT)	History (027), Psychology (037), Vocal Music (034), Commercial Arts (052), Physical Education (048)
				SET 3 (ANY ONE SUBJECT)	Geography (029), Political Science (028), Commercial Arts (052), Hindi Core (302)
				SET 4 (ANY ONE SUBJECT)	Commercial Arts (052), Vocal Music (034), Entrepreneurship (066), Home Science (064), Information Practice (065), Political Science (028), Entrepreneurship (066), Mathematics (041)

IGCSE SUBJECTS

Group 1: Languages	Group 2: Social Sciences	Group 3: Sciences	Group 4: Mathematics	Group 5: Creative, Technical & Vocational
English as First Language (0500), Hindi Second Language (0549), French as a Foreign Language (0520)	Economics (0455), Literature (0475), History (0470), Global Perspectives (0457)	Physics (0625), Chemistry (0620), Biology (0610)	International Mathematics (0607), Additional Math (0606)	ICT (0417), Business Studies (0450), Art & Design (0400), Computer Science (0478)

NMS COVID- 19 UPDATE

When all educational institutions were shut by the Indian Government in March 2020, for an indefinite period in the country, Neerja Modi School transitioned to virtual instruction through synchronous learning for all academic and co-curricular activities. This called for large scale counseling of students and parents, particularly, as families faced challenges of limited availability of devices to work from home, and government regulations limiting screen time for students. The students also faced severe setbacks in their Science practical lab work and CAS activities , without access to laboratories, library and field visits. The school moved all assessments online ensuring academic honesty through strict monitoring procedures.

Our college counseling department has also gone virtual. The main goal was to support students in navigating these unprecedented times, adapting to their new virtual environment, and developing coping skills to deal with stressors from the pandemic and isolation: we focussed on nurturing social and emotional well-being. The virtual program provides seniors and their families with individual meetings, small group counseling sessions, and classroom guidance presentations. Additionally, virtual college rep visits, virtual college fairs, as well as virtual application workshops are organised to ensure students' college applications are accurate, thoughtfully completed and deadlines are met. Some of our students faced difficulties in accessing standardised tests this year as tests were cancelled across various centres and English proficiency testing was difficult to access.

ANNUAL GRADUATING CLASS RECOGNITION

School awards that recognize student achievements in several categories including:

- Shrimati Bimla Gupta Memorial Gold Medal: for the Most Promising Girl Student of the Year
- Shri Anshoo Sudhir Gupta Memorial Gold Medal: for the Most Promising Science Student of the Year
- Pt. Birju Maharaj Dance Trophy: for the Best Dancer of the Year
- Edgemaker Award: for Innovative and Entrepreneurial Achievement
- Social Impact Award: for Exemplary Service for a Social Cause
- Distinguished Student Leader Award: for Accomplished Leadership Role



STUDENT OPPORTUNITIES

NMS offers wide ranging opportunities to students to engage in meaningful co- curricular and leadership experiences. This includes Jaipur Debate, MUN, Research Programmes, National and International Olympiads, Annual Day performances, School fete, Science & Robotics fair, Art Exhibitions, Interschool Competitions, Community Service (Nischay & local NGOs) Leadership programmes like TEDxYouth@NMS, Student Council responsibilities and Sports competitions (Football, Basketball, Cricket, Swimming, Tennis, Table Tennis, Archery, Chess and Badminton).

Students have engagement opportunities through school societies nurtured by clubs including the STEM Society, Mathematics Society, Neuroscience Society, Debating Society, Heritage Society, Technology Society, Robotics Society, Art Society and a range of clubs. The School Societies, mentored by faculty and led by High School students, organize weekly activities, fairs and exhibitions with the aim to nurture student talent and interest. Each student is allowed to join not more than two societies or club in an academic year.

Nischay is an NGO which strives to educate underprivileged girls free of cost: uniforms, school bags, books, mid-day meals and conveyance facilities are all covered. Vocational expertise is imparted in our sewing and crafts room, as well as our baking and confectionary classes. Students from Grade 4 to 12 engage with Nischay by teaching various subjects, mentoring the girls and sharing subjects like dance, art, sports, photography, and digital learning. These community activities bring the students together and help foster values of empathy, compassion and respect towards others.

ACADEMIC CURRICULUM

We operate on a semester calendar with Semester 1 from April to September, and Semester 2 from October to March. International IGCSE and IB Diploma Program:

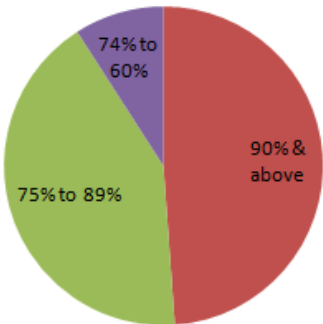
IGCSE 9-10: A minimum of 7 and maximum of 10 Subjects
IBDP 11-12: 3 Subjects at Higher Level & 3 at Standard Level, TOK course, 4000 word Extended Essay & minimum of 150 hrs of CAS

National CBSE:
CBSE 9-10: 6 Subjects - English, Hindi, Sanskrit or French, Mathematics, Science, Social Science
CBSE 11-12: Streams offered: Science, Commerce & Humanities
5 Subjects have to be studied for 2 continuous years
*Graded for Work Education, Physical Health Education and General Studies.

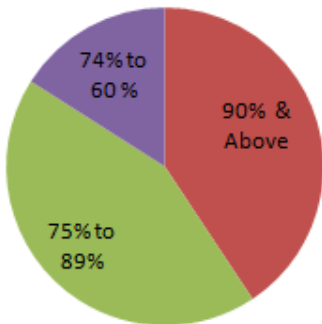
RESULT 2019-20

CBSE RESULT 2019	IBDP RESULT 2019
TOTAL NO. OF STUDENTS 314	TOTAL NO. OF STUDENTS 23
HIGHEST SCORE 98.8%	HIGHEST IBDP SCORE 44
SCHOOL AVERAGE 86.9%	SCHOOL AVERAGE DIPLOMA SCORE 38.8
ENROLLMENT 2020 - 2021 CBSE CURRICULUM	100% RESULT 100% DIPLOMAS AWARDED
Total: 4281	ACT Score Average for the Class of 2020
High School (9-12): 1326	Subject Average Score Highest Score
Graduating Class: 307	Math 33 35
Science: 91	Science 33 36
Commerce: 136	Reading 28 36
Humanities: 80	English 29 36
INTERNATIONAL CURRICULUM	Composite 31 35
CP (1-8): 600	SAT Score Average for the Class of 2020
IGCSE (9-10): 80	Subject Average Score Highest Score
IBDP (11-12): 73	EWB 593 730
IB Graduating Class: 30	Math 693 800
	SAT 1281 1530

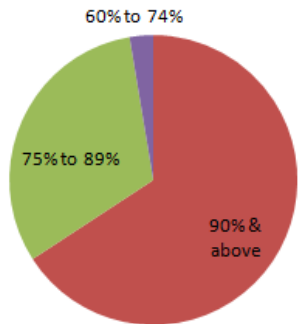
XII- SCIENCE 2020



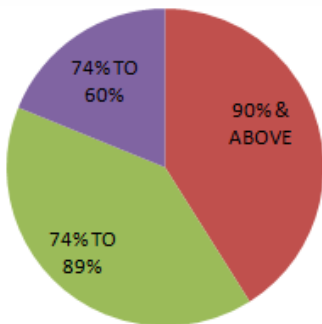
XII- COMMERCE 2020

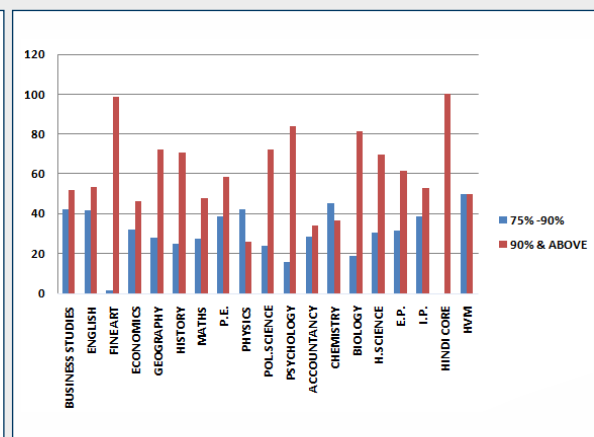
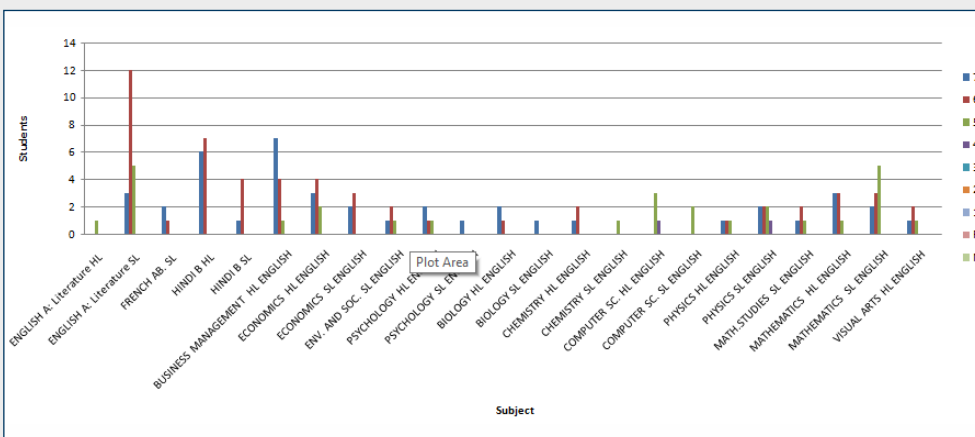


XII- HUMANITIES 2020



X-2020





NATIONAL ACCEPTANCES

All India Institute of Medical Science
 Amity University
 Ashoka University
 Bharti Vidyapeeth University
 Birla Institute of Technology- Pilani, Ranchi & Dubai
 Christ College, Bangalore
 Delhi University - SRCC, Miranda House
 Engineering Colleges- Mumbai University
 Fergusson College, Pune
 Flame University
 Government Law College Mumbai
 Indian Institute of Information Technology
 Indian Institute of Science & Research
 Indian Institute of Technology- All Campus
 Institute of Hotel Management
 ISDI Parsons- Mumbai
 Jaipur Dental College
 Kamala Raheja College of Architecture
 Mahatma Gandhi Medical College
 Manipal University- Manipal, Jaipur
 Mount Carmel Bangalore
 Mumbai University - All Colleges
 Narsee Monjee Institute of Management Studies
 National Institute of Design
 National Institute of Technology
 National Law University- Hyderabad, Bangalore & Kolkatta
 National Institute of Fashion Technology
 Nirma University
 OP Jindal Global University
 Sawai Maansingh Medical College
 Shristi College, Bangalore
 SRM University, Chennai
 St. Xavier's College- Mumbai, Kolkatta & Jaipur
 Symbiosis University Pune
 Unitedworld Institute Of Design (UID)
 UPES, Dehradun
 Vellore Institute of Technology- Chennai

INTERNATIONAL ACCEPTANCES

Australia

Australian National University
 Deakin University
 Macquarie University
 Monash University
 University of Melbourne
 University of New South Wales
 University of Queensland
 University of Wollongong
 University of Sydney
 RMIT University
 University of Technology Sydney

Canada

Brock University
 Carleton University
 Dalhousie University
 Lancaster University
 McGill University
 McMaster University
 Ontario Tech University
 Queen's University
 Ryerson University
 Simon Fraser University
 Trent University
 University of Alberta
 University of British Columbia
 University of Calgary
 University of Guelph
 University of Ottawa
 University of Toronto
 University of Victoria
 University of Waterloo
 University of Western Ontario
 Wilfrid Laurier University
 York University

United States

Amherst College
 Arizona State University
 Augustana College
 Bentley University
 Beloit College
 Binghamton University- SUNY
 Boston University
 Bowling Green State University
 Brandeis University
 Bryant University
 Bryn Mawr College
 Carnegie Mellon University
 California Institute of Technology
 California Polytechnic State University
 Carleton College
 Case Western Reserve University
 Clarke University
 Cleveland Institute of Art
 Colgate University
 Cornell University
 Connecticut College
 Dartmouth College
 DePaul University
 Dickinson College
 Drexel University
 Duke University
 Earlham College
 Elon University
 Emory University
 Fashion Institute of Technology
 Florida Atlantic University
 Florida Institute of Technology
 Fordham University
 Full Sail University
 Franklin W.Olin Engineering College
 Georgia Institute of Technology
 Georgia State University
 Goucher College
 Harvey Mudd College
 Indiana University
 IOWA State University
 Ithaca College
 Jefferson College
 Johns Hopkins University
 Johnson & Wales University
 Juniata College
 Kalamazoo College
 Kenyon College
 Knox College
 Lafayette College
 Lawrence University
 Lehigh University
 Lynn University
 Maryland Institute College of Art
 Massachusetts College of Art Design
 Middlebury College
 Michigan State University
 Mount Holyoke College
 New York University
 New York Institute of Technology
 Northeastern University
 Oberlin College
 Ohio Wesleyan University
 Ohio State University
 Pace University
 Penn State University
 Philadelphia University
 Pratt Institute
 Purdue University
 Quinnipiac University
 Reed College
 Rhode Island School of Design
 Rice University
 Rollins College
 Rose-Hulman Institute of Technology
 Rutgers University

Sacred Heart University
 Santa Barbara City college
 San Jose State University
 Savannah College of Art and Design
 SCAD Atlanta
 School of the Art Institute of Chicago
 Seton Hall University
 Skidmore College
 Stony Brook University
 SUNY Plattsburg
 SUNY Newpaltz
 SUNY Stony Brook
 SUNY Buffalo
 Swarthmore College
 Syracuse University
 Temple University
 Texas Christian University
 The University of West Alabama
 Tufts University
 Tulane University
 Union College
 University of Arizona
 University of Georgia
 University of British Columbia
 University of California- Berkeley
 University of California- Davis
 University of California- Irvine
 University of California- Los Angeles
 University of California- San deigo
 University of California- Santa Cruz
 University of California- Santa Barbara
 University of Connecticut
 University of Florida
 University of Houston
 University of Illinois Chicago
 University of Illinois at Urbana
 University of Massachusetts Amherst
 University of Minnesota- Twin cities
 University of Michigan- Ann Arbor
 University of North Carolina-Chapel Hill
 University of Pennsylvania
 University of Pittsburgh
 University of Rochester
 University of San Deigo
 University of San Francisco
 University of Southern California
 University of Tampa
 University of Texas at Dallas
 University of Virginia
 Villanova University
 Wesleyan College
 University of Washington- Seattle
 University of Wisconsin, Madison
 USC- Marshall School of Business
 Vanderbilt University
 Virginia Tech University
 Washington College
 Williams College
 Wheaton College
 Whitworth University

Japan

Ritsumeikan University
 Ritsumeikan Asia Pacific University
 Tokyo University
 Waseda University
 Osaka University

Europe

Catholic University of the Sacred Heart
 Cologne Bussiness School
 European Business school
 Glion- Institute for Higher Education
 International Business School Budapest
 Trinity College Dublin
 University of Amsterdam
 University of Groningen
 University of Twente
 Vrije Universiteit Amsterdam

United Kingdom

Aston University
 Birkbeck, University of London
 Cardiff University
 City University London
 De Montfort University
 Durham University
 Goldsmiths, University of London
 Heriot-Watt University
 Hult International Business School
 Imperial College- London
 King's College London
 Lancaster University
 Leeds Beckett University
 London School of Economics
 Loughborough University
 Middlesex University London
 Manchester Metropolitan University
 New Castle University
 Nottingham Trent University
 Queen Mary University of London
 Royal Holloway, University of London
 SOAS, University of London
 University College London
 University College Birmingham
 University of the Arts London
 University of Bath
 University of Birmingham
 University of Bolton
 University of Bristol
 University of Cambridge
 University of Cumbria
 University of Derby
 University of Dundee
 University of Edinburgh
 University of Essex
 University of Exeter
 University of Glasgow
 University of Hertfordshire
 University of Leeds
 University of Leicester
 University of Liverpool
 University of Manchester
 University of Northampton
 University of Nottingham
 University of Portsmouth
 University of Richmond
 University of Southampton
 University of St Andrews
 University of Sussex
 University of Warwick
 University of West of England, Bristol
 University of West London
 University of Westminster
 University of York

Hong Kong

City University of Hong Kong
 Hong Kong Baptist University
 Hong Kong University
 Hong Kong University of Science & Tech.
 Savannah College of Art and Design
 The Chinese University of Hong Kong
 The University of Hong Kong

Netherlands

Erasmus University Rotterdam
 Leiden University College The Hague

Singapore

Lasalle College of the Arts
 National University of Singapore
 Nanyang Academy of Fine Arts
 Nanyang Technological University
 Singapore Institute of Management
 Singapore Management University